

# The OPCC Scene



## OVERLAND PARK CHRISTIAN CHURCH

(Disciples of Christ) 

7600 West 75th Street

Overland Park, KS 66204 • 913.677.4646

[www.opccdoc.org](http://www.opccdoc.org) • @opccdoc (Twitter) • [www.facebook.com/opccdoc](http://www.facebook.com/opccdoc)

Sharing Christ's Love by  
Serving our Neighbors while  
Growing as Jesus' Disciples

### SUNDAY SERVICES

**Traditional Family Worship — 9:30 a.m.**

**Christian Education for Children and Adults — immediately following Worship**

**Nursery available at both hours**

## OPCC in Heaven's Eyes

In heaven's eyes there are no losers,  
in heaven's eyes, no hopeless cause.  
Only people like you with feelings like me,  
amazed by the grace we can find  
in heaven's eyes.

— Phill Mchugh

Often I return home in the evening to hear my Christina sitting at the piano practicing this or that piece of music, or singing a song from the past that had surfaced in her spirit. Some weeks ago I walked in on her rendition of a song performed by Sandi Patti, *In Heaven's Eyes*, which for some reason had come to mind. Its lyrics immediately struck me as appropriate for our Visioning Process, and Chris agreed that perhaps thinking about the process had stirred her spirit and evoked this song.

However this may be, I think its chorus describes in broad strokes the vision we seek for our faith community. We want to view OPCC and its ministry from God's perspective; reaching out to our community with a love and compassion modeled on God... and God alone. In short, we want to understand our mission in heaven's eyes.

But make no mistake; it will be no easy task to see ourselves in heaven's eyes, and to assess our purpose and ministry on the basis of God's fervent desire for fulfillment, peace, and justice in our lives and in our world. Nonetheless, I do not hesitate to challenge us to accept this difficult task and summon the *courage, faith, creativity, and humility* required to fulfill it. We will need *courage* to see our faith community and the situation we face openly and honestly; we will need *faith* to hold on to

*(continued on next page)*

God's promise to accomplish something new in our midst; we will need *creativity* because God will not drop a vision whole-cloth from heaven, but desires to work with us in envisioning the future; and we will need *humility* to rise above and beyond a selfish view of our faith community and its purpose, asking not what the church has done for me lately, but rather asking God to work in and through us to share good news far and wide.

We have already put a significant amount of effort into this process. Our board and staff have discussed, studied, and prayed about this vision process for over a year; our congregation engaged in an extensive discussion of case studies of churches that have faced situations like ours; and our vision team has been recruited and organized to lead us into the next phase of the process, which includes:

**Small Group Discussions.** Look for signup sheets for a small discussion group in the narthex beginning Sunday, February 9. These groups of six or so people will meet to dream and discuss the vision God has for us.

**Community Scouts.** While these discussions proceed, we will send scouts out to talk to folk in our community – police, school officials, social agencies, and the like – to identify needs we may have overlooked in the past.

**Vision Retreat.** When all voices have been heard, visions and dreams shared, and information from the community gathered, we will gather a larger group to discern the vision of ministry that weaves them all together. This statement of vision and mission will then be brought back to the full congregation, and when we all affirm and commit ourselves to this vision we will move forward together into God's future!

Bo

## Sanctuary Rededication Sunday, February 23 @ 9:30 AM

We will rededicate our newly renovated worship space during morning worship on February 23.

This will be a joyful time of celebration and consecration.

We will celebrate the completed project so long anticipated; and we will consecrate ourselves as a faith community to the purpose for which it was undertaken: to share the joy of faith, to grow in our spiritual lives, and to reach out to our community with a heart felt invitation to join us on our spiritual walk.

The Worship & Arts Commission has appropriately chosen to designate this day "Bring a Friend Sunday"; or "Each One Bring One Sunday" ...whatever you want to call it, it will be an opportunity to focus this day on the purpose of our renovation rather than on the space itself; to focus on our commitment to share the joy of faith with more and more people.

Please be on the lookout for more information on this wonderful opportunity, and keep the life and ministry of our faith community in prayer. And, visit the library counter to find cards similar to this one → for you to use to invite others on this special day!

**Due to possible inclement weather this Saturday, the Congregational Meeting originally scheduled for Saturday, February 8, has been postponed to THIS SUNDAY, FEBRUARY 9, @ 11:00 IN FELLOWSHIP HALL.**

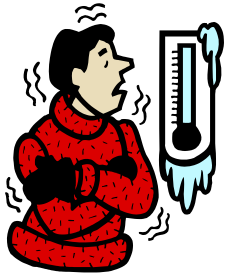
Please join us in the Fellowship Hall at 11:00 am this Sunday for information facilitated by Kathy Kinder regarding Advanced Medical Care Directives.

  
OVERLAND PARK  
CHRISTIAN CHURCH

### "Bring a Friend Sunday"

Come join us and see why OPCC isn't your average church! On Sunday, February 23, at 9:30 AM, join us for a celebration of a worship space FOR YOU and all people!





Here's a way to feel warm inside no matter the temperature outside – **deliver BackSnacks!** It only takes an hour once every 3 weeks. Use your cold fingers to call Jane Fletcher at 913-449-5785.



**Johnson County Interfaith Hospitality Network**  
*Empowering Homeless Families by Engaging People of Faith*

## WEEK OF COMPASSION February 16-23

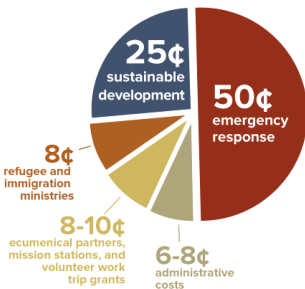


Have you ever watched ants working? Ants are all about cooperation. Working together, they can accomplish amazing things! Week of Compassion, the Disciples disaster and humanitarian aid response, is much like an ant colony.

Week of Compassion works through a remarkable network of church partner organizations and partnerships that ensures that our response to humanitarian needs in the world is efficient, effective, and faithful. Through these partnerships, Disciples are able to join a tapestry of caring that brings help and hope to hurting people in every corner of the world.

You can learn more about some of our partners by visiting [www.weekofcompassion.org](http://www.weekofcompassion.org) and clicking on the "Partners" link. OPCC will receive the WOC offering on February 16 and 23.

**Out of every \$1 given to Week of Compassion...**



Change the world in an accountable, **efficient, trustworthy, effective, sustainable** way by supporting our mission today.

[DONATE](#)

## New Home for Family Lodge

The Salvation Army Family Lodge in Olathe dedicated its new facility on February 3.

The new building replaces the 40s era motel with safer, more spacious and appropriate housing for homeless families. OPCC helps support the Lodge through our outreach budget. Ask Steve Glasscock for more information.

**IHN Family Center to get New Home**  
A recent email from Interfaith Hospitality Network director Vicki Dercher shared some exciting news. The IHN Family Center is moving to a new and larger space at College and Lamar. The Center houses staff and day time facilities for the homeless families who are overnight guests in our congregations. OPCC provides both volunteers and regular financial support to this ministry.

Vicki writes: *Our goal is to be moved into the new Family Center by April 15. We will be located in the College Boulevard Business Park at College and Lamar. Build out on the new day center will commence on February 1, 2014. Floor plans have been completed and the new facility will be so much more spacious for our guest families. Our current location has 2,500 square feet. Our new location has 4,620 square feet!*

*This move would not be possible without the abundant generosity of an anonymous donor. The donor and his wife have pledged \$55,000 to \$70,000 for build out costs. In addition, I have located twelve very generous individuals who have each pledged \$1,000.00. May they always feel the love and gratitude of their IHN Family!*

## OPCC's Next IHN Host Week February 23 – March 2, 2014

We are currently "lifting-up" three families that include four adults and nine children. The national model is fourteen, but we could exceed that number because we can host four families and the next family coming in could put us over that number. This shows the importance of our willingness to serve and welcome those in need.

If you are interested in volunteering and have not been trained, **new training sessions** will be Tuesday, March 18, 6:30-9:00 p.m. or Wednesday, May 14, 6:30-9:00 p.m. (Locations to be announced)

For more information, please contact Barb Collins at [barbcollins@kc.rr.com](mailto:barbcollins@kc.rr.com) or call 816-807-8520.

February is here and that means Sweethearts & Valentines! Are you going to be the cupid of someone special this Valentine's Day? Why not do it up right and have a very special day by including your heart for OPCC by using Scrip cards? What a sweetie you would be!!



Baptism classes will begin in early March for any child or youth ready to take this step in their faith journey. Classes will meet weekly during the Christian Education hour on Sunday mornings (11 am to noon). If you have any questions regarding baptism or the class, please feel free to contact Lisa Setty. Please also contact Lisa if your child/teen would like to be a part of this year's class. Baptisms will be scheduled for Easter Sunday, April 20.



WHO? All kids 4th—12 grade  
WHERE? Emerald City ,  
9063 Bond

WHEN? Sunday, Feb. 16 9:30 pm  
till Monday, Feb. 17 7:30am  
(President's Day Weekend)

HOW MUCH? \$25/kid

WHAT TO BRING? A snack to share, pillow,  
sleeping bag, lots of energy!

Join us at the 2nd annual Youth Squared Event! We'll join with kids from other area churches to have a blast at this great gym where kids can bounce, jump, climb, run and burn off a ton of energy with their friends. RSVP to Lisa at 913-677-4646 or [lisa@opccdoc.org](mailto:lisa@opccdoc.org). Waivers are required for all attendees and can be acquired from Lisa.

## Summer Camp 2014

at Tall Oaks

It's cold and snowy now, but summer will be here before we know it! It's time to get the kids signed up for summer camp at Tall Oaks. Camps options are offered for children just completing Kindergarten through 12th grade. The Tall Oaks informational fliers will be up on the bulletin boards at the church soon. You may also get information

at <http://talloaks.org/WP/summer-camp/>.

Early bird registration (prior to April 30) will give you a \$25 discount. OPCC does have a limited amount of scholarship money.

Please see Lisa Setty for more information.



## Youth Mission Trip June 30 to July 4

(returning mid  
afternoon for family  
celebrations).

We will be joining up to 300 other Disciples youth for a fun week of mission work in Oklahoma City. All youth who have completed grades 6-12 are welcome on this trip.

**COST:** \$250 per youth

**DEPOSIT:** \$50 will be due by February 15.

For more information go to:

[http://www.disciplessummermission.com/DISCIPLE\\_SUMMER\\_MISSION/HOME.html](http://www.disciplessummermission.com/DISCIPLE_SUMMER_MISSION/HOME.html)

**COMMITMENTS ARE DUE TO LISA NOW!**

(We are looking for a male sponsor to accompany us—contact Lisa if interested.)



Save the date!

June 22-26

6 - 8:30pm

Our mission team would like to extend a **HUGE thank you** to everyone who has helped us with out fundraising efforts. Each team member's cost is approximately \$1600.



Our fundraising goal is \$5000 and we have about \$2000 more to go.

**Mission Trip**

You have helped us out considerably!  
Our next fundraisers are another fun Bingo event and a garage sale (see information below).

<b>BINGO</b>				
15	28	37	51	73
6	17	32	45	61
9	15	★	60	70
12	26	44	52	66
7	22	34	48	72

**Saturday, March 1, 2014**

**4-6 pm**

(note the different time)

**Great Hall**

(Kid's Worship Room)

**\$7 for first Bingo card and \$1 for additional cards**

**Any "regifts" for prizes are welcomed!**

Proceeds benefit the Costa Rica Mission Team

## Rummage Sale Fundraiser

**Saturday, March 29th**

**OPCC Fellowship Hall**

Do you have some extra "stuff" that you are looking to get rid of, and would like to help the church and our mission trip to Costa Rica at the same time? The Costa Rica Mission group will be hosting a Rummage Sale Fundraiser to assist us in going on our mission trip in June. If you have ANYTHING (anything that you would sell at your own garage sale we will accept as a donation) you would like to donate to our Rummage Sale, please make plans to drop it off at the church March 23rd – 28th during normal business hours, or March 24th – 28th in the evening 6pm – 8pm. Tell your friends and neighbors that we will gladly accept their donation as well!

Also, please let us know if you are able to provide any cardboard boxes, plastic grocery bags, trash bags, price stickers and/or sodas/water and baked goods to sell on that day. All of these items will help us to set up the Rummage Sale and to box-up any donations left-over at the end. Help support our mission team and clean out your closets at the same time! Please contact Laura Phillips if you have questions.

## Solo Sidekicks Singles Group

Friday, February 21 at 6 PM  
Dinner at Cozy's Café, 6740 West 75th Street  
We will need a count of those attending.  
Please sign-up at the Library Counter or call Jean at 913-541-8837.

## Care & Share

The Care and Share Grief Support Group will go to The Olive Garden at 95th & Metcalf on Wednesday, February 26. Meet at OPCC at 11:30 a.m. to carpool. Please give Peggy Moore reservation by February 24.

## Empty Nesters—

reserve February 28 for a movie and a meal with the Hartzlers at Lakeview Village-Southridge. Time, menu, and movie TBA.

## Mary Martha CWF Circle

will not meet in February. Our next meeting will be Thursday, March 13, 2014.

## Weaving Our Lives

**body, mind, & spirit**

**Greater Kansas City Women's Spring Retreat**

March 14-15, 2014

Tall Oaks Conference Center

Keynote Speaker: Rev. Laura Phillips

Contact Evelyn Eastwood or Lois Wimpey for more information. We had a great time last year, and so did Marge White and 130 others! Or call the Regional Office, 913-432-1414.

## Girlfriends Unlimited

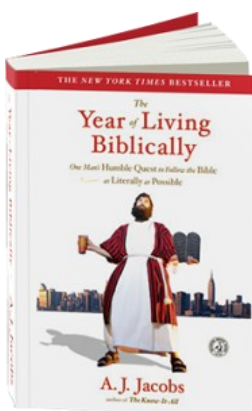
All women are invited to join us Wednesdays, 7:00-8:30 p.m. in the Fireside Room. We will be studying and discussing Sarah Young's "Jesus Calling." If you do not have a book, please get in touch with Peggy Moore at [wpmoore@wildblue.net](mailto:wpmoore@wildblue.net) or 913-856-3833.

## Men's Fellowship Group

The Men's Fellowship Group meets on the first Saturday of each month from 8:00 – 9:30 a.m. in the Fireside Room for breakfast, study, and fellowship. All men are invited to join us. For more information, contact Wayne Moore at 913-856-3833 or Emerson Hartzler at 913-422-1378.

## Hungry Spirits Discussion Group

Are you hungry for a little something more? Do you enjoy satiating conversation and food? Are you ready to mix it up? Our Hungry Spirits Discussion Group might be JUST what you are looking for. Bo and Laura intend to bring a “new” book to light, inviting you to join in our Hungry Spirits discussion group on a Wednesday night. We will have both good conversation and good food, satisfying all kinds of hunger!



This time around we will be discussing “The Year of Living Biblically,” an entertaining and easy read by A.J. Jacobs. “The Year of Living Biblically” is the author’s question to live the ultimate biblical life; to follow every single rule in the Bible as literally as possible. Jim Wallis says, “I commend this inspired narrative to anyone

actively exploring the continued relevance of biblical living, religion’s need for self-reflection and the timelessness of authentic faith.”

Please consider joining us on Wednesday, February 19<sup>th</sup> at 6:00pm in the Fireside Room for discussion and dinner. Please contact Rev. Laura if you have any questions.

## Holy Land Trip Opportunity

Have you ever been interested in a trip to the “Holy Lands,” but weren’t sure how that would happen. Are you concerned about certain aspects of that kind of trip, but still intrigued by the idea? OPCC has been invited by Liberty Christian Church to join them on a Holy Lands trip in early 2015. They are exploring departure dates in mid January to early February.

Liberty Christian has invited us to an informational meeting on Monday, February 24, at 7:00pm at an LCC member’s home.

We can carpool from OPCC to Terry and Pam Strang’s home at 823 Kings Ridge, Liberty, MO.

**If you have ever considered (even slightly) a trip to the “Holy Lands,” this is the meeting for you!** If you have any interest, or questions, please contact Rev. Laura and we can explore this opportunity together!

## Christian Caregivers

The Christian Caregiver Support Ministry is a safe place to receive helpful guidance and accept your calling to be a caregiver. We invite you to join us in the Fireside Room on Monday afternoons from 1:00–2:30 as we seek to support one another in our sometimes challenging and difficult tasks.

(We will not meet whenever Shawnee Mission Schools are closed due to inclement weather.)

For more information, contact Peggy Moore at [wpmoore@wildblue.net](mailto:wpmoore@wildblue.net) or 913-856-3833.

## “Ashes To Go” on Ash Wednesday

It is hard to believe that Ash Wednesday and Lent will be here before we know it. As we continue to discern ways that we are able to reach out to our community and to be more present in Overland Park, we have decided to offer “Ashes To Go” on Ash Wednesday, March 5. This will be in addition to any worship services we have here at OPCC on that day. We will choose a public place (still TBD) and offer a new approach to a centuries-old Christian tradition.

As part of a nation-wide movement that has clergy and lay people visiting transit stops, street corners, coffee shops, and college campuses to mark the foreheads of interested passers-by with ashes and invite them to turn toward God during the holy season of Lent, “Ashes to Go” will provide an opportunity for people in Overland Park to participate in that tradition for those who have lost their connection to a church, have never participated before, or simply are not able to attend a service on Ash Wednesday.

We are still in the “thick” of the planning stages, but we hope that you will mark your calendar to help with this new opportunity and reach out to the community in a new way. Contact Laura at [laura@opccdoc.org](mailto:laura@opccdoc.org) or ext. 222 at the church if you have any questions, or are interested in helping out!



## Stewardship Green Moment

by Jody Cash

### Green Tips for February

1. If you purchase just one or two things, ask the store not to bag them—this will save on bags in landfills.
2. Look for the Energy Star Label when buying electronics for the home or office. As you need to replace old electronic products, buy energy efficient replacements—this can save billions of pounds of greenhouse gases and also save you money on your electric bill.
3. Look for products that carry the “Design for the Environment” (DfE) label. Products with this label are safer for the family and also helps the environment. Data collected for 2011 showed that Americans using DfE products cut the use of harmful chemicals by over 756 million pounds.
4. ALWAYS put generators outside well away from vents, windows, and doors. This will help prevent carbon monoxide poisoning.
5. In the winter, have your home tested for radon gas levels. Each year in the U.S., as many as 22,000 people die of lung cancer due to indoor radon. The EPA (Environmental Protection Agency) has a hotline with information about radon testing. Call 1-800=SOS-RADON (1-800-767-7236).
6. Check air ducts to ensure that as much warm air as possible is delivered through your central heating system. Check for leaks and wrap any leaks with duct mastic. By sealing the leaks, you will be warmer, it will increase your furnace’s efficiency ,and make your furnace work less.
7. Use non-toxic de-icing substances such as sand, fireplace or stove ash, or clean clay cat litter to prevent hazardous waste from chemicals.
8. Be sure to winterize your vehicle. Check the air filter and fluid levels, check tires for tread wear and proper inflation, and check the condition of your windshield wipers. By doing these things, you can reduce damage caused by changes in the weather.
9. Save ashes from a wood-burning fireplace. When cold wood ashes are mixed in a compost heap, they can be used to help provide nutrients to your garden.
10. You should use an electric snowblower rather than a gasoline powered one because the electric ones do not emit greenhouse gases. You can always use snow shovels, ice crackers, and brooms to clear your porch, driveway, and sidewalks, if you prefer.

Hope these tips have helped you.  
Have a Happy Valentine’s Day!

## From your Renovation Committee

Your renovation committee wishes to give all participants of the Sewing Seeds and pew/chair pledges a big THANK YOU again. The hiring of Laura and the renovation could not have been done without YOUR wonderful support. God has truly blessed OPCC with great families and dedication. We continue to get "pledges for seats"...our total is now up to **262 seats** pledged. Your additional support for this endeavor has covered **72%** of the cost for the new pews and chairs. After a few more months, we will make up a plaque listing all the donors (along with the names of the "in honor of" or "in memory of") to the pew/chair fund. Wish to give this more time so we do not need to re-do the plaque later...please be patient with us. Thank you.

Submitted by,  
Lee Sprinkle, chair of Renovation Committee

## From your Property Commission

Here are some expenditures for property:

- \* January was a very busy month for snow removal which costs us anywhere from \$800 to \$1,800 (depending on depth and amount of ice melt needed) for each removal. In fact, as this is being written we are having what is to be a record snow fall for February!!!
- \* The boiler needed some repairs on Friday, 1/31/14 which will cost approximately \$400 to \$600.
- \* Approximately \$5,400 was spent to paint, carpet, and add electrical outlets to rooms 35 and 36 to get it ready for leasing to Church World Services. OPCC will be leasing this space for \$900/month so pay back will be only 6 months.

Our building is used heavily by OPCC and outside groups so here are some building use reminders;

- \* Please leave room floors and tables in clean condition.
- \* If you use the kitchenette or main kitchen, clean the counters and sinks plus put all dishes away.
- \* Turn off all lights within the rooms as you leave.
- \* Stacking chairs in Fellowship Hall:
  - a. stack only 8 chairs high...additional chairs adds too much weight to the chair frames within the stack
  - b. black framed chairs should be stacked separately...not with chrome or gold framed chairs
  - c. chrome and gold framed chairs can be stacked together but not more than 8 high
- \* If your group experiences any light or electrical issues, please report it to the receptionist and she will relay it to the proper person(s).

Submitted by,  
Lee Sprinkle, chair of Property Commission

## Prayer List

### Prayers of Concern

- ♥ Abby Anderson (Eric & Laura Sprinkle's niece)
- ♥ Betty Burton
- ♥ Bryan Byrd (Judy Nickum's son-in-law's father)
- ♥ Brody Gilcrist (Tom Nelson's great-grandson)
- ♥ Carole Ingram
- ♥ Bob Marangelli (Wilma Townsend's son-in-law)
- ♥ Ann Martin
- ♥ Everett & Ina Fern McBride
- ♥ Faye McBride (Calvin McBride's sister-in-law)
- ♥ William Pittman and his sister Delene (friends of Billie Warden)
- ♥ Kelsey Poston (Tom Nelson's granddaughter)
- ♥ Josh Townsend (Wilma Townsend's grandson)
- ♥ Elizabeth Withers
- ♥ Jim Withers

### Continued Prayers

- ♥ Linda Anthony
- ♥ Frances Beattie
- ♥ Margaret Bogle
- ♥ Martha Brockman
- ♥ Margo Brown
- ♥ Virgil & Frances Bruning
- ♥ Lylia Bryant
- ♥ John Cobb
- ♥ Phyllis & Harvey Cooke
- ♥ Glenn (Bud) Eastwood
- ♥ Corwin Elliott
- ♥ Haley Elliott
- ♥ Jim Foley
- ♥ Dave & Hazel Ginter
- ♥ Marlene & Gordon Harkness
- ♥ Lee Horton
- ♥ Wilma Huffman
- ♥ Bob & Sue Jenkins
- ♥ Dan Jenkins
- ♥ Sandy Jewers
- ♥ Dorothy Jimerson
- ♥ Mary Johnson
- ♥ Theresa Krebs
- ♥ Audrey & Lloyd Lavelly
- ♥ Marie Lear
- ♥ Hazel McCullough
- ♥ Shirley McGee
- ♥ Jack McLain
- ♥ Marjorie McNaghten
- ♥ Tony & Florene Miele
- ♥ Wilma Nickum
- ♥ Bob Prince
- ♥ Mary Rayburn
- ♥ Belva Snell
- ♥ Dale Warden
- ♥ Miriam Warren
- ♥ Esther West

## Stephen Ministries Training

Dates for 2014:

Meet in Fireside Room 10:30 a.m. – 12 Noon  
on these Wednesdays:

February 12 (change from February 5)

March 5, April 2, & May 7 (in the Choir Room)

### A Praying Congregation

As members of OPCC, we are all part of a faith community in which we have promised to pray with and for each other. The Congregational Care Commission invites you to be an active part of these prayers. To help us in this endeavor, we will begin sending prayer requests to all members through the phone tree. Should you desire that your personal requests be discretely shared only with pastors and Congregational Care members, please let the church office know.

### January Gifts

- A gift has been given from Jody Cash in memory of Charlotte Mabry
- A gift has been given from Jody Cash to the Marge Foley memorial
- A gift has been given from Joe & Jean Zacher to the Marge Foley memorial
- A gift has been given from Bette Scafe to the Toodie Withers memorial
- A gift has been given from Jody Cash to the Toodie Withers memorial
- A gift has been given from Wilma Townsend to the Toodie Withers memorial

### Military Prayer List

- ✦ Stephan Aelmore (grandson of Mary Aelmore), US Navy, South Carolina
- ✦ Dustin Doree (grandson of Betty Craney), US Army, Seattle, WA
- ✦ Tiffany Doree (granddaughter of Betty Craney), US Navy, San Diego, CA
- ✦ LT Scot Engman (nephew of Monica Gfoeller McCarthy and Lawrence McCarthy), USAF, Elmendorf, Alaska
- ✦ SGT Stephen James Green (son of Marijane Green), US Marine Corps
- ✦ SPC Edward Pinkelman, Jr. (son of Ed & Kathy Pinkelman), US Army, Italy

To add persons to this list, please forward information to Michelle Reiter at

[michelle@opccdoc.org](mailto:michelle@opccdoc.org) or 913-677-4646, x223.



# C . L . A . S . S .

Christian Living and Skills Series

*"We teach everyone we can that we know about Him, so that, if possible, we may bring all to their full maturity in Jesus Christ." —Colossians 1:28*



## Adult Christian Education Class Schedule Sundays 11:00 a.m.-noon

### “Fearless”

The class in Room 40 will continue Max Lucado’s video and discussion series called “Fearless” — overcoming fear with the Word of God.

Sundays from 11 a.m.-12 noon.

All are welcome—please join us.

For more information contact Mary Aelmore.

### “Feasting on the Word”

This Adult Bible Study continues Sunday mornings at 11 in Fellowship Hall Northwest, and follows the lectionary used in our worship service.

All are welcome to join us!

Leader: Peggy Moore

## New Sunday Morning Discussion Group!

On Sunday, February 16<sup>th</sup> at 11:00am, we will begin a new discussion group during the Christian Education hour.

We will honor a variety of topics in this discussion group, so some days it might feel like “Sunday School,” while many days it won’t. We will focus on how we teach spirituality, and keep our faith in the home. Church isn’t the only place we can be spiritually fed – and we want to help you with resources.

If you are looking for a group that discusses a variety of topics and how our faith, religion, and spirituality intersects with those topics, from a variety of view-points, then this is the group for you!

We will use books, news clippings & stories, movies, the Bible, and your opinions to facilitate this group.

Contact Rev. Laura with questions!

### Your OPCC Staff

**913-677-4646**

[info@opccdoc.org](mailto:info@opccdoc.org) (general church e-mail address)

Senior Pastor..... Bo Crowe  
[bo@opccdoc.org](mailto:bo@opccdoc.org) ext. 225

Associate Pastor ..... Laura Phillips  
[laura@opccdoc.org](mailto:laura@opccdoc.org) ext. 222

Pastor of Visitation..... Ed Hitzelberger  
[ejhitz@everestkc.net](mailto:ejhitz@everestkc.net) ext. 224

Children & Youth Pastor ..... Lisa Setty  
[lisa@opccdoc.org](mailto:lisa@opccdoc.org) ext. 228

Communications Coordinator/  
 Bookkeeper ..... Michelle Reiter  
[michelle@opccdoc.org](mailto:michelle@opccdoc.org) ext. 223

Receptionist ..... Kourtney Leibman  
[kourtney@opccdoc.org](mailto:kourtney@opccdoc.org) ext. 221

Music Director ..... Amy Luckenbill  
[amy@opccdoc.org](mailto:amy@opccdoc.org)

Assistant Music Director ..... Chris Elliott  
[Chris@ChrisElliottRE.com](mailto:Chris@ChrisElliottRE.com)

Homeschool Christian Academy Dir... Molly Fisher  
[homeschoolchristianacademy@msn.com](mailto:homeschoolchristianacademy@msn.com) ext. 238

### Your 2013-14OPCC Board of Directors

Larry Kinder ..... Chair

Dan Horton ..... Vice Chair

Jody Cash ..... Treasurer

Greg Wienberg ..... Secretary

Jane Fletcher ..... Leader Development Liaison

Sharon McBride ..... Commission Liaison

### The OPCC Scene is published the first Thursday of each month

**Copy deadline for next issue is  
March 4 for March 6 mailing.**

### Help us reduce paper and postage costs!

If you would like to be removed from this mailing list or to receive this publication by e-mail, please contact Michelle Reiter at 913-677-4646, ext. 223, or [michelle@opccdoc.org](mailto:michelle@opccdoc.org)